
Interval velocity estimation via Kirchhoff-based differential semblance

Jintan Li and William W. Symes

Rice Inversion Project Annual meeting, January 2006

Introduction

Velocity analysis updates velocity parameters to flatten primary reflections in image gathers.

Differential semblance velocity analysis (DSVA) optimizes a differential measure of gather flatness:

- mean square of all differences between *neighboring* traces in prestack image volume (DS). (so tries to flatten everything !)

Theory:

- DS is *unique* velocity-dependent quadratic form in prestack image volume, which is *smooth in data and velocity* (Kim & WWS 98, Stolk & WWS 03)
- For version based on NMO, *all stationary points are global minima* for noise-free *primaries only* data (WWS 01)

Versions of DSVA

- Hyperbolic or ray-trace NMO correction in CMP and plane wave domains (Carazzone & S. 91, Minkoff & WWS. 97, S. 98)
- Two way reverse time (Versteeg & WWS. 93, Kern & WWS. 94)
- Prestack Kirchhoff migration (Chauris & Noble 01, Mulder & ten Kroode 01, Brandsberg-Dahl & deHoop 03)
- Shot profile and DSR migration (Shen et al. 03, Foss et al. 04)

For reliable results, all variants require

- suppression of coherent noise (multiples, unmodeled converted waves,...)
- velocity models compatible with imaging engine (usually: nonreflecting)

Part I : NMO-based DSVA

When:

- lateral heterogeneity is weak
- coherent noise (eg. multiple reflection) can be suppressed

NMO-based DSVA interval velocity estimation is:

- kinematically accurate
- robust
- fast (100+ traces /s on modest workstation)

NMO-based DSVA

Simplest possible prestack imaging engine \Rightarrow *fastest* but accurate only for slow lateral variation of velocity and reflector structure.

Our implementation:

- standard data structure (SEG-Y) for data input and diagnostic output
- standard preprocessing: filter, mute, various noise suppression methods
- flexible velocity modeling accommodating 1D, 2D, and 3D variation, but enforcing smoothness and upper and lower velocity envelopes(use "PIGrid", see TRIP 2005 report)
- effective numerical optimization (limited memory BFGS)

NMO and Derivatives

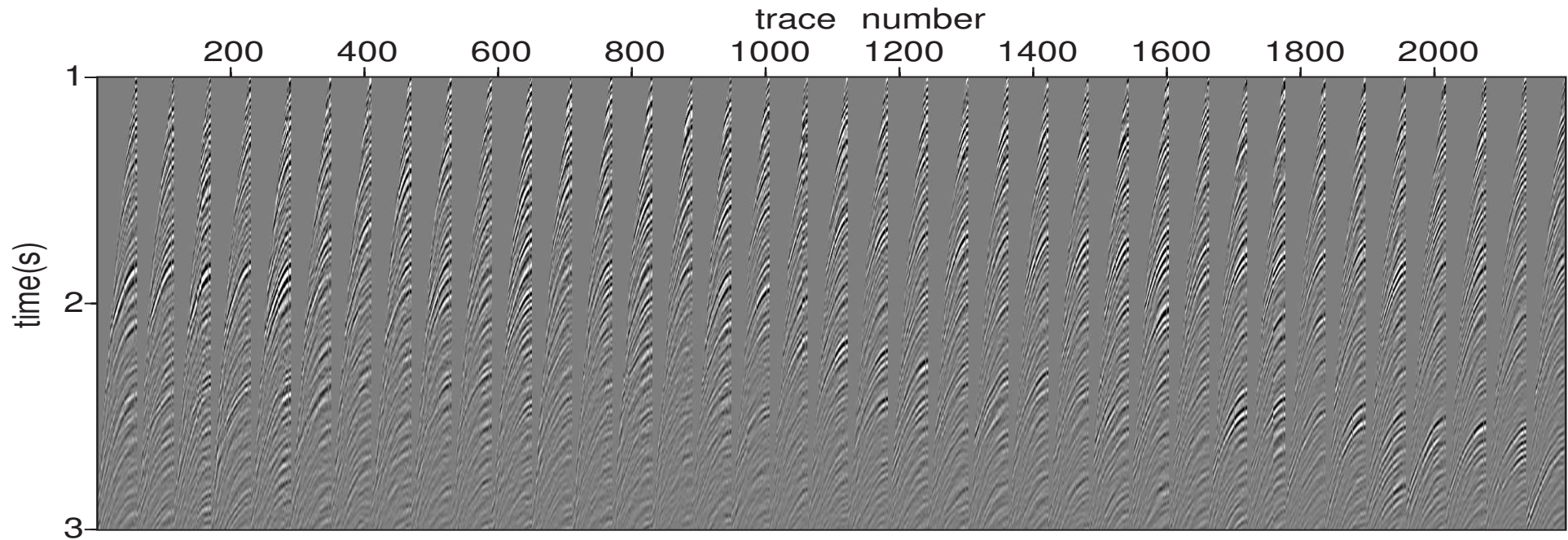
NMO-based DSWA requires:

- NMO transformation - can get this anywhere (eg. SU)
- *Derivative* and *adjoint derivative* of the NMO transformation with respect to velocity
- Implemented hyperbolic moveout using local polynomial interpolation, degree ≥ 3 to assure sufficiently smooth response to velocity perturbation

Adaptive Choice of Velocity Model Dimension

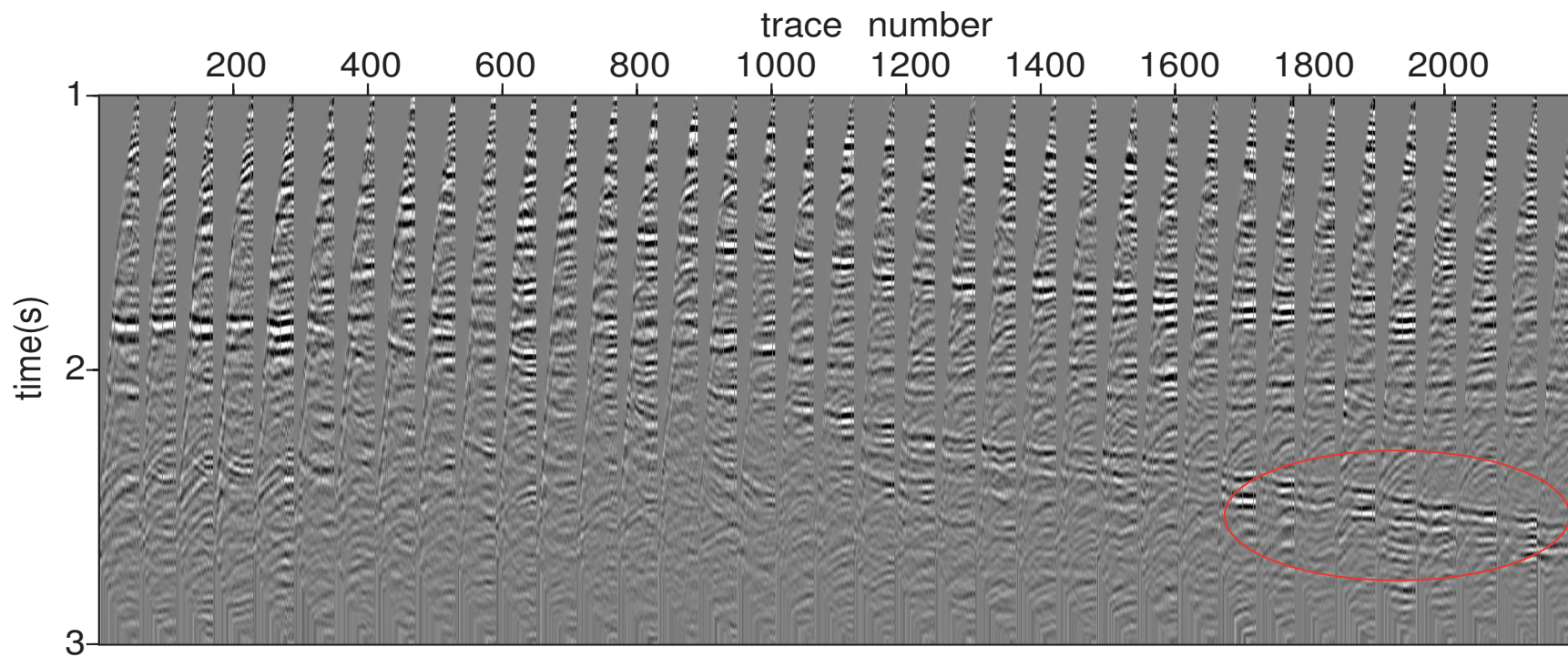
- First pass: find optimal 1D model. If the gathers are flattened adequately, end; otherwise go to second pass
- Second pass: find optimal 2D model. If the gathers are flattened adequately, end; otherwise go to third pass.
- Third pass: find optimal 3D model, end.

Example

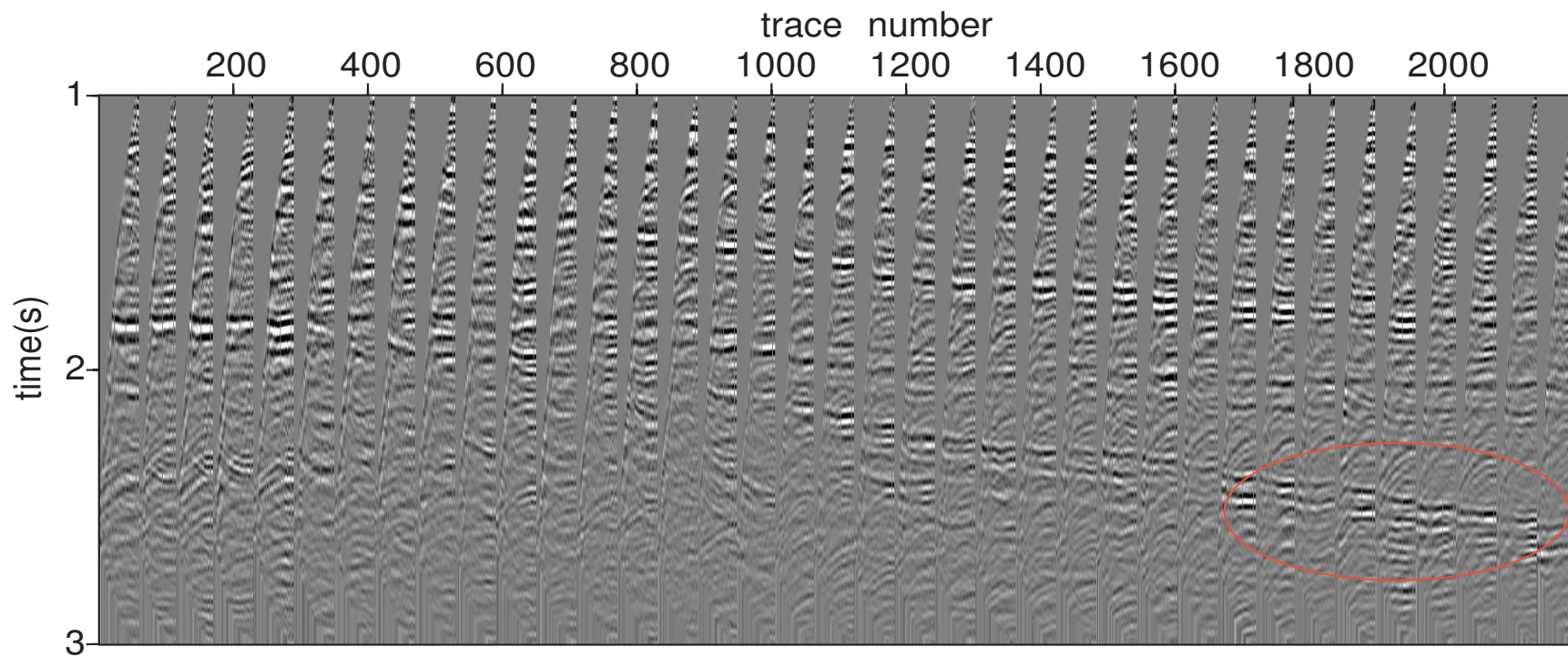


38 CMPs extracted from the **Viking Graben** data set. Preprocessing: *hyperbolic radon transform multiple suppression*, zero phase band pass filter, mute. (Keys and Foster,1996)

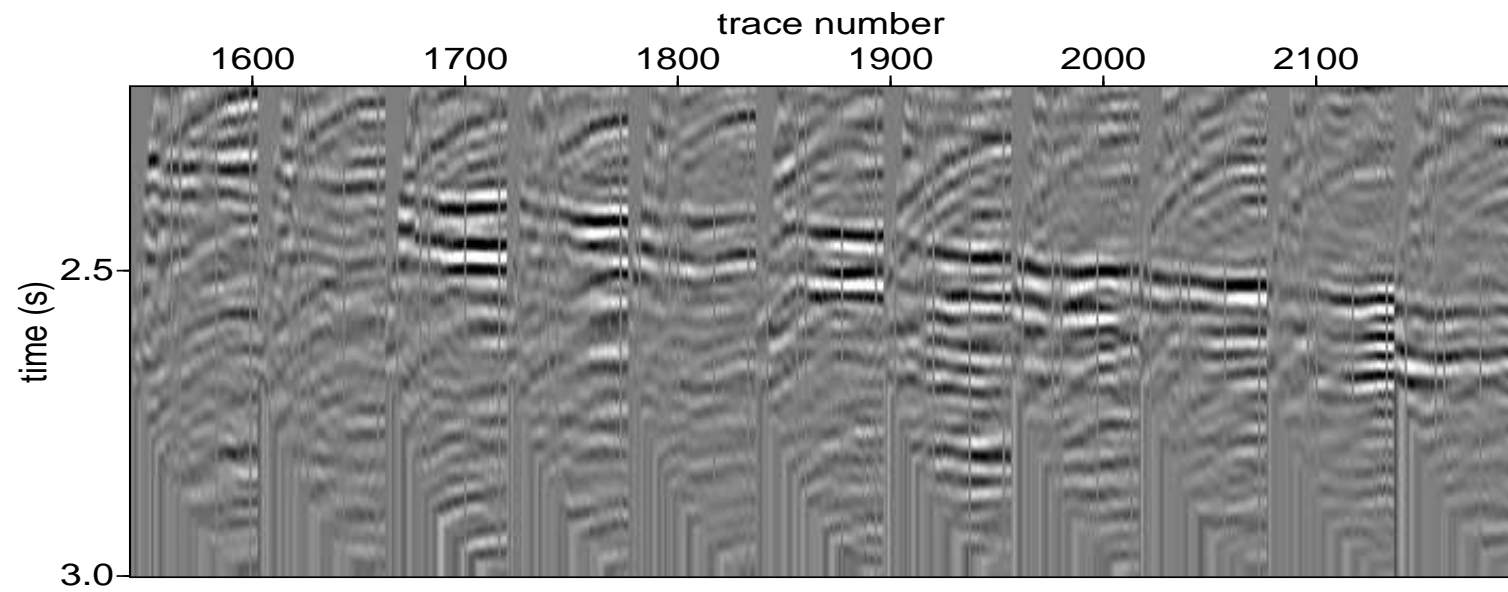
NMO corrected gathers after DSVA, $v(z)$:



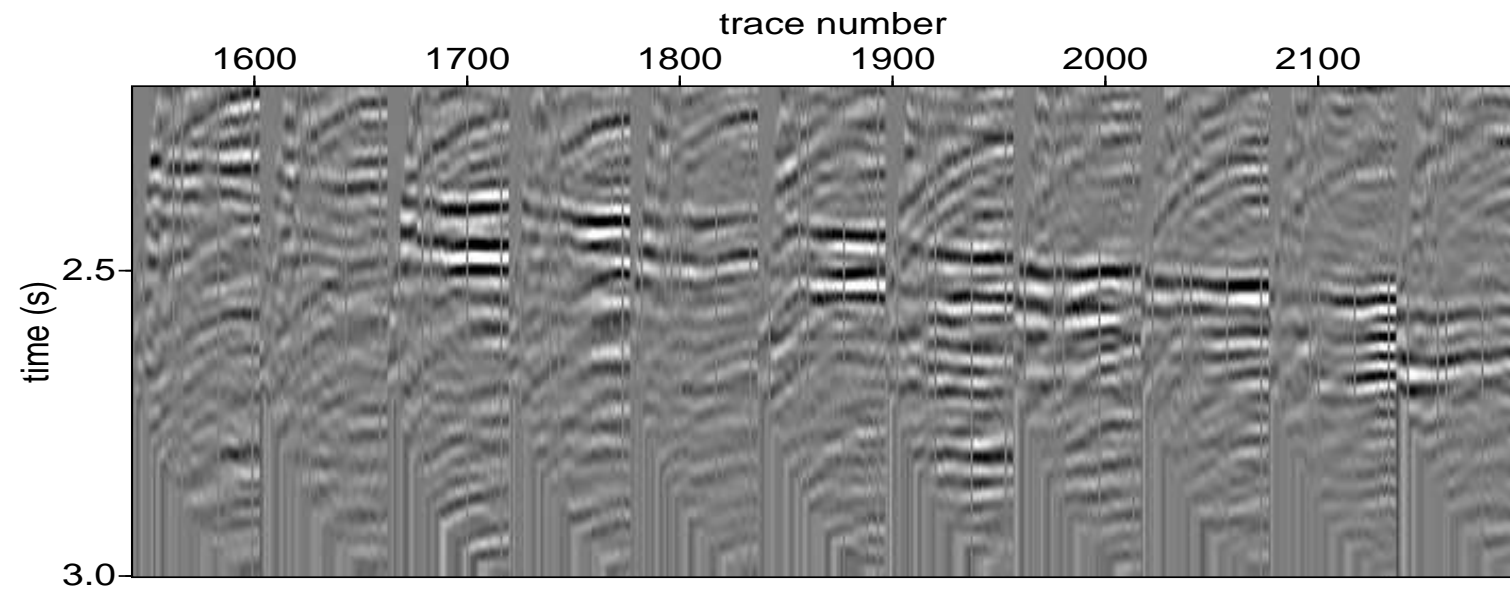
NMO corrected gathers after DSVA, $v(x, z)$:



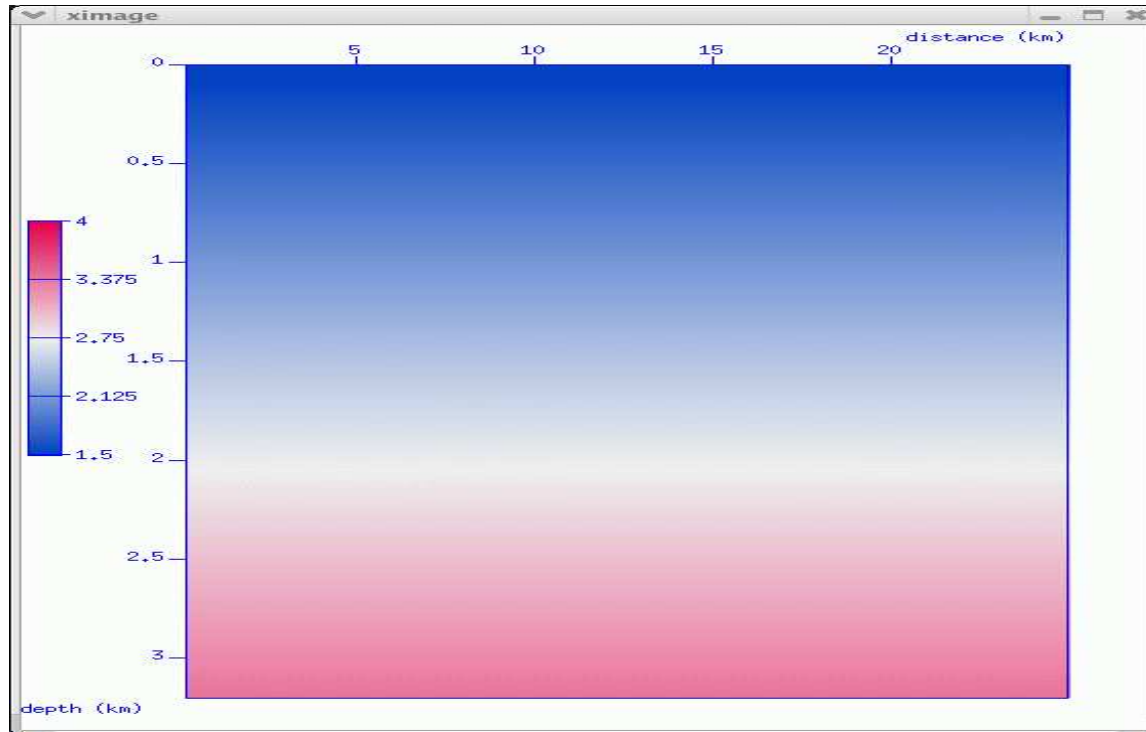
Detail: gathers from $v(z)$ DSVA



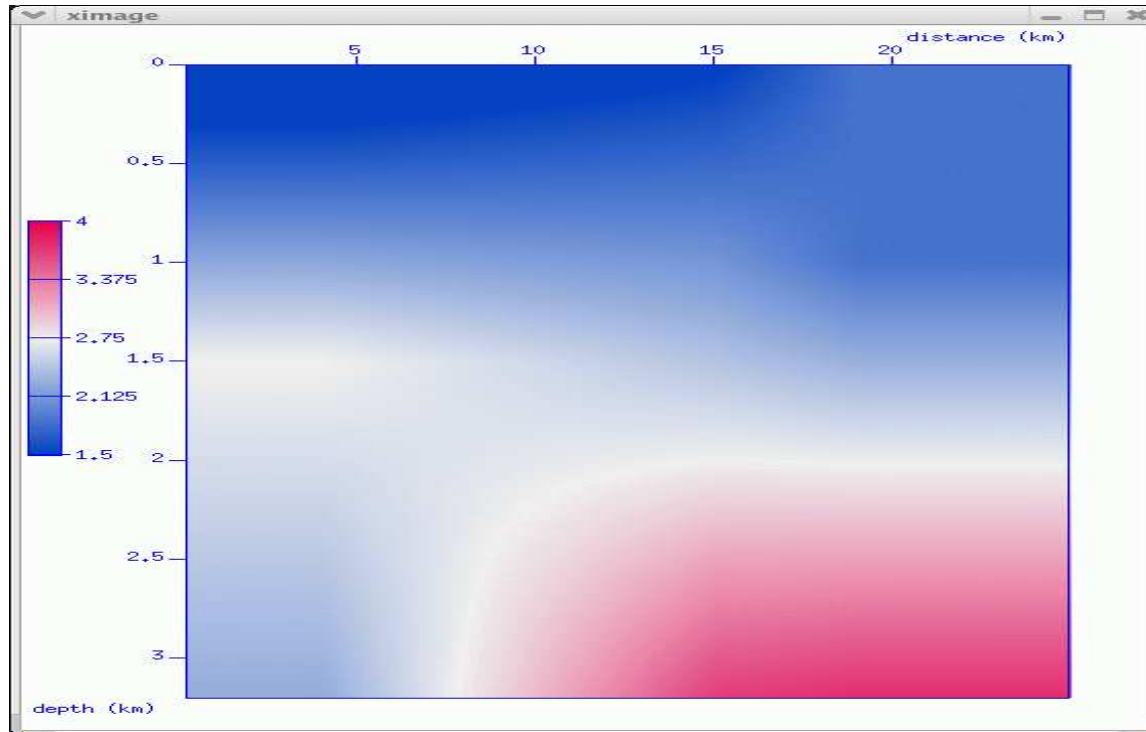
Detail: gathers from $v(x, z)$ DSVA



DSVA : $v(z)$ Interval velocities



DSVA : $v(x, z)$ Interval velocities



Conclusion for Part I

- For regions of mild lateral heterogeneity and data from which coherent noise can be suppressed, NMO-based DSVVA may give useful, fast, and robust initial velocity estimates
- Coherent noise (eg. multiple reflections) degrades accuracy - for better automatic VA, such noise must be either suppressed from data or included in VA wave propagation model

Part II : Kirchhoff migration DSVA

Kirchhoff migration:

- A high-frequency approximation of the wave equation
- Image grid can be arbitrarily specified
- Can yield good and reasonable results except when the multipathing occurs
- Low computational cost

Part II: Kirchhoff migration

The image is computed by:

$$r_{[v]}(x, h) = \int dx_s d_{[v]}(x_s, x_r, T_{[v]}(x_s, x) + T_{[v]}(x, x_r)) * A_{[v]}(x_s, h...) \quad (1)$$

$T_{[v]}(x_s, x)$: travel time from source to the reflection point;

$T_{[v]}(x, x_r)$: travel time from reflection point to receiver

$A_{[v]}(x_s, h...)$: the specified amplitude, which can vary under different circumstances

Differential semblance

The DS objective is:

$$J[v, d] = \frac{1}{2} \sum \left| \frac{\partial r}{\partial h} \right|^2 = \frac{1}{2} \sum_{i=0}^{Nh-1} \left\langle \frac{r_{i+1} - r_i}{\Delta h}, \frac{r_{i+1} - r_i}{\Delta h} \right\rangle \quad (2)$$

(image: $r_i = r(h_i, \tilde{x})$, offset: $h_i = h_0 + i\Delta h$)

hence

$$\delta J = \sum_{i=0}^{Nh-1} \left\langle \frac{r_{i+1} - r_i}{\Delta h}, \frac{\delta r_{i+1} - \delta r_i}{\Delta h} \right\rangle \quad (3)$$

let

$$f_i = \frac{r_{i+1} - r_i}{\Delta h} \quad (4)$$

$$\begin{aligned}
\delta J &= \sum_{i=0}^{N_h-1} \left\langle f_i, \frac{\delta r_{i+1}}{\Delta h} \right\rangle - \sum_{i=0}^{N_h-1} \left\langle f_i, \frac{\delta r_i}{\Delta h} \right\rangle \\
&= \langle f_{N_h-1}, \delta r_{N_h} \rangle - \langle f_0, \delta r_0 \rangle + \sum_{i=1}^{N_h-1} \left\langle \frac{f_{i-1} - f_i}{\Delta h}, \delta r_i \right\rangle \\
&= \sum_{i=1}^{N_h-1} \left\langle \frac{\frac{r_i - r_{i-1}}{\Delta h} - \frac{r_{i+1} - r_i}{\Delta h}}{\Delta h}, \delta r_i \right\rangle + \langle f_{N_h-1}, \delta r_{N_h} \rangle - \langle f_0, \delta r_0 \rangle \\
&= \sum_{i=1}^{N_h-1} \left\langle \frac{2r_i - r_{i+1} - r_{i-1}}{\Delta h^2}, \delta r_i \right\rangle + \langle f_{N_h-1}, \delta r_{N_h} \rangle - \langle f_0, \delta r_0 \rangle
\end{aligned} \tag{5}$$

here

$$q(\tilde{x}) = \begin{cases} f_0 & i = 0 \\ \frac{f_{i-1} - f_i}{\Delta h} & i = 1, \dots, N_h - 1 \\ f_{N_h-1} & i = N_h \end{cases} \tag{6}$$

The derivative of the image

The derivative of the image is:

$$\delta r_{[v]}(\tilde{x}, h) = \int dx_s \frac{\partial d}{\partial t}(x_r, x_s, T_{[v]}(x_s, \tilde{x}) + T_{[v]}(x_r, \tilde{x})) * (\delta T_{[v]}(x_s, \tilde{x}) + \delta T_{[v]}(x_r, \tilde{x})) \quad (7)$$

Bring δr into δJ , we get:

$$\begin{aligned} \delta J &= - \sum_{i=0}^{N_h-1} \left(\sum_{\tilde{x}} \sum_{x_s} q_i(\tilde{x}) \frac{\partial d}{\partial t}(x_r, x_s, T_s + T_r) (\delta T(x, x_s) + \delta T(x_s + 2h, x)) \right) \\ &= - \sum_{\tilde{x}} g(\tilde{x}) (\delta T(x, x_s) + \delta T(x_s + 2h, x)) \\ &\quad + \text{boundary conditions} \end{aligned} \quad (8)$$

The gradient of the objective function

Find an operator $A(y)$ such that

$$\langle A(y)g, \delta v \rangle = \langle g(\tilde{x}), \delta T(y, \tilde{x}) \rangle \quad (9)$$

which means

$$\sum_{\tilde{x}} (A(y)g)(\tilde{x}) \delta v(\tilde{x}) = \sum_{\tilde{x}} g(\tilde{x}) \delta T(y, \tilde{x}) \quad (10)$$

do this for $y = x_s$, $y = x_s + 2h$, then the gradient objective is:

$$\nabla J[v, d] = \sum_{\tilde{x}, h} (A(x_s)g)(x_s, \tilde{x}, h) + (A(x_s + 2h)g)(\tilde{x}, x_s + 2h, h) \quad (11)$$

Velocity representation

Possibilities:

- constant velocity (test first)
- piecewise linear
- B-splines
- PIGrid ("Partially Irregular Grid")(see 2005 TRIP report)

Travel time and amplitude calculation

Travel time calculation:

Fast sweeping method for both time and adjoint calculation (see Jianliang Qian's talk)

Amplitude calculation: (later...)

Data preparation

- Coherent noise and direct waves should be sufficiently suppressed or muted
- The data is presorted by increasing 3D offset - will work for both 2D and 3D data with the header words critically defined (sx,gx,gelev,selev,offset...) (use suazimuth & susort)

Implementation

- Define a global image grid (NX,NY,NZ,OX,OY,OZ,dx,dy,dz)
- Loop over each trace in each common offset gather
 - Compute the travel time table and the amplitude on the global image grid
 - Choose the local grid within which all the traveltimes \leq Max data time ($nt * ns + delrt$)
 - Calculate the image on this local grid
- Update the common offset image gather
- Compute the derivative of the image gather
- Compute the objective and the adjoint derivative of the objective

Acknowledgement

Thanks for Total E & P for their financial support for this work.